



**BIA Health and Wellness**

Wilmington, DE 19805  
 jpierce@hardcar.com  
 517.712.4529

**Sample 174-070220-002**

500 mg CBD oil- Vanilla

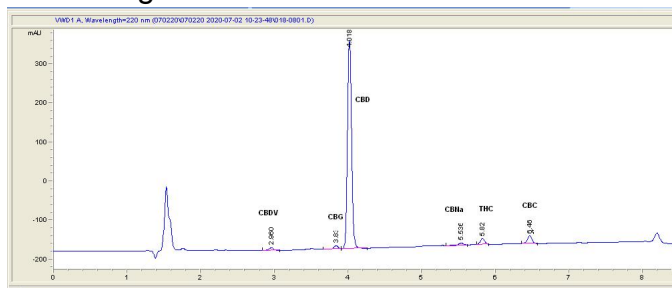
Sample Submitted: 07-02-2020; Report Date: 07-02-2020

Sample Density: 940 mg/ml; Sample Unit Size: 28.40 g

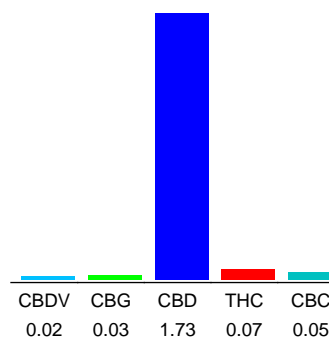
## 500 mg CBD oil- Vanilla

Tincture

### Chromatogram



### Cannabinoid Profile



### Cannabinoid Profile by HPLC

**0.07%**  
 Calculated THC Yield

**1.73%**  
 Calculated CBD Yield

**1.90%**  
 Total Cannabinoids

Cannabinoid	% wt	mg/ml	mg/unit
CBDV	0.02	0.188	5.68
CBG	0.03	0.282	8.52
CBD	1.73	16.26	491.32
THC	0.07	0.658	19.88
CBC	0.05	0.47	14.2
<b>Total Cannabinoids</b>	<b>1.90</b>	<b>17.9</b>	<b>539.6</b>
<b>Calculated THC Yield</b>	<b>0.07</b>	<b>0.66</b>	<b>19.88</b>
<b>Calculated CBD Yield</b>	<b>1.73</b>	<b>16.26</b>	<b>491.32</b>

Calculated Maximum THC Yield =  $THC + 0.877 * THCA$   
 Calculated Maximum CBD Yield =  $CBD + 0.877 * CBDA$

**Marin Analytics, LLC**  
 250 Bel Marin Keys Blvd, Suite D4  
 Novato, CA 94949  
 415-936-6477 / Support@MarinAnalytics.com

*Sara Biancalana*  
**Sara Biancalana**  
 Chief Scientist

This sample has been tested by Marin Analytics, LLC using valid testing methodologies and a quality system. Values reported relate only to the sample tested. Marin Analytics, LLC makes no claims as to the efficacy, safety or other risks associated with any detected or non-detected levels of any compounds reported herein. This Certificate shall not be reproduced except in full, without the written approval of Marin Analytics, LLC.